

Joachim Heintz

Bizarre Plätze

Displaced Locations

Spielpartitur Elektronik / Performance Score Electronics

comments and explanations are in the main score only:

https://joachimheintz.de/stuecke/part/bp_score_main.pdf

2022

2022

Bizarre Plätze

Version for electronics performer

♩ = 54



Voice

DER

♪ Sprechstimme

mf < f

Per- cussion

0 5 9 15 19 21 25

Tomtom

r.H. f

l.H. + Druck

mp

Bongos

ff mf

The percussion section contains three staves. The top staff is for the Tomtom, starting at 0 with a dynamic of *f* and ending at 5. The middle staff is for Bongos, starting at 9 with a dynamic of *mp* and ending at 25. The bottom staff is for Bongos, starting at 19 with a dynamic of *ff* and ending at 25. There are also dynamic markings *f* and *mf* at 19 and 21 respectively. A 'Druck' (pressure) diagram is shown below the Tomtom staff, with a '+' sign at 0 and a '-' sign at 5, connected by a line that rises and then falls.

Cue

0 5 10 15 16 19 21 25

A horizontal timeline with vertical tick marks. Boxes containing the numbers 0, 15, 16, 19, and 21 are placed above the timeline. Downward arrows point from each box to the timeline.

Elec- tronics

mit Tonhöhe (ähnlich Tomtom)

pp

metallisch (Ratsche)

mf p

The electronics section contains two staves. The top staff is labeled 'mit Tonhöhe (ähnlich Tomtom)' and shows a series of vertical lines of varying heights, with a dynamic of *mf* at the start and *p* at the end. The bottom staff is labeled 'metallisch (Ratsche)' and shows a series of vertical lines of varying heights, with a dynamic of *p* at the start and *pp* at the end.

>

f < pp

A dynamic marking *f* is followed by a crescendo line that curves upwards and then levels off, ending with a dynamic marking *pp*. Above the line is an accent mark (>).

3

p > ppp

A triplet of notes is shown with a dynamic marking *p* followed by a crescendo line that curves upwards and then levels off, ending with a dynamic marking *ppp*.

V

25 30 36 40 45 50

FLUSSSS

ff (sehr laut flüstern)

P

25 31 34 40 45 49

Rohre

pp

p

mf

Bongos

mf

Tamtam

Cue

25 30 35 40 45 50

45

E

f

V

50 54 60 65 72 75

BEKAM

kindlich singen

mf

SCHMRZN

sehr verspannt, Überdruck

ff

P

50 55 60 65

mit der Rückseite der Bürste schlagen

68 70 75

Rohre

mp

Waldteufel

70 75

f

Cue

50 55 60 66 68 70 75

E

p (*pp*)

(ähnlich Rohr 3)

(etwas aufgerissener als bei 16)

V

75 80 85 92 100

IM ARM

p gesungen, hoch

P

75 79 82 87 90 96 99 100

Woodblock

Tomtom

r.H. *f*

Tomtom (Griff)

L.H. Druck

Tamtam

r.H. *p*

L.H. *p*

Cue

75 79 87 90 95 100

79 87

E

Rauschen, Mittellage

p

mf *p*

V

100 | | | | | | | | | | 106 | | | | | | | | | | 110 | | | | | | | | | | 115 | | | | | | | | | | 120 | | | | | | | | | | 125

UND

Sprechstimme

$mf > p$

100 | | | | | | | | | | 105 | | | | | | | | | | 110 | | | | | | | | | | 115 | | | | | | | | | | 120 | | | | | | | | | | 125

P

Alufolie

(Finger beider Hände)

mp

Cue

100 | | | | | | | | | | 105 | | | | | | | | | | 112 | | | | | | | | | | 120 | | | | | | | | | | 125

E

sehr hoch

6

p mp f

krachen, fallen

p f

5 (E)

V

150 155 163 170 175

163
IH-

mf p

150 151 160 169 175

P

Rohre
Stiel
Schlägel

6
1 2

p pp p pp

Waldteufel

langsam mit Knacksern
möglichst glissando

f

Cue

150 152 163 170 173 174

E

quasi clicks

f

Orgel Luftton

p

Glöckchen

p mp p

p

V

175 | | | | | 179 ↓ | | | | | 185 | | | | | 190 | | | | | 195 | | | | | 200 |

M
Mittellage
mp

P

176 ↓ | | | | | 189 ↓ | | | | | 198 ↓ | | | | |

Bongos
(am Rand)
mf pp

Tempelblock
p

Woodblock
r.H. f

Cue

175 | | | | | 180 ↓ | | | | | 181 ↓ | | | | | 190 ↓ | | | | | 199 ↓ | | | | |

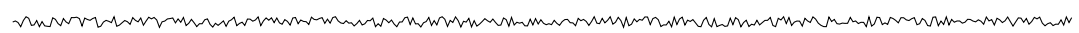
sehr hoch, quasi Sinus
p

E

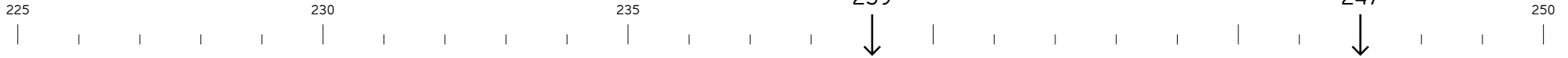
mf

"m"
mp

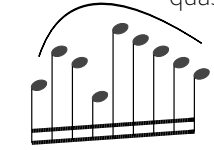
Mittellage
p



V

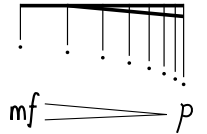


SANG quasi Kantilene



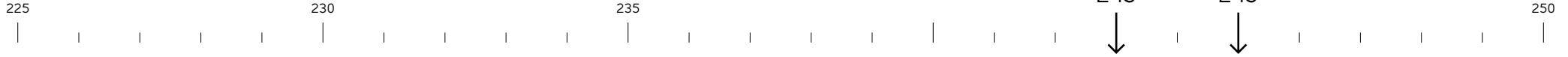
mf < f > mf

DER



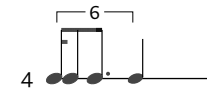
mf > p

P



Rohre

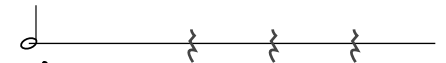
▄▄▄▄ (Rückseite)



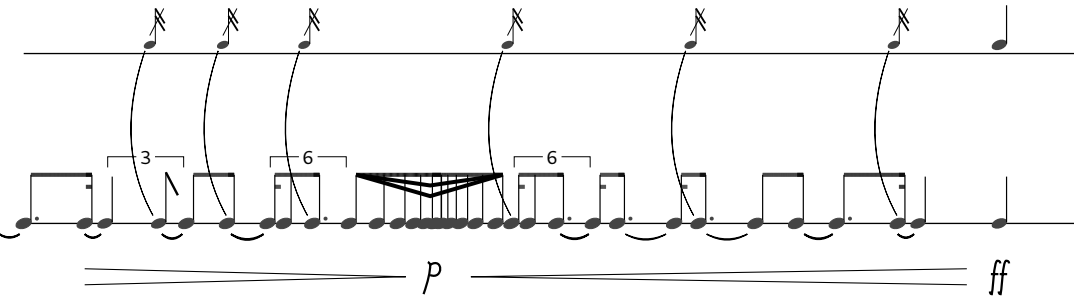
p < f

Tamtam

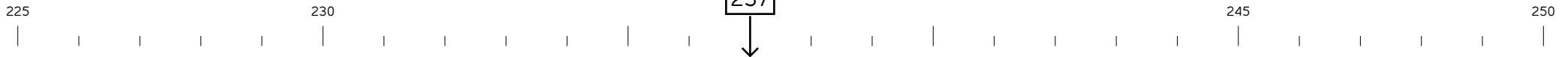
▄▄▄▄ (normal)



mf



Cue



237

quasi Bürste auf Tamtam



p

E

V

250 255 260 265 270 275

NCKT(E)

P

250 255 260 265 270 275

Quietschtier

quasi Kantilene

Cue

250 254 260 262 263 268 273 275

E

Ton

gefärbtes Rauschen

quasi Rohre

Sinus als Quietschtier

fast gleich

pp p

ff

f

p

p

Detailed description: The image shows a musical score for two parts, 'NCKT(E)' and 'Quietschtier', with cues and dynamics. The score is organized into four horizontal sections: 'V', 'P', 'Cue', and 'E'.
 - **V**: Shows measure numbers 250, 255, 260, 265, 270, and 275. At measure 270, there is a downward arrow and the text 'NCKT(E)' above a wavy line representing a sound effect.
 - **P**: Shows measure numbers 250, 255, 260, 265, 270, and 275. At measure 260, there is a downward arrow and a key signature change symbol. At measure 265, there is a downward arrow. At measure 270, there is a downward arrow and the text 'Quietschtier' above a wavy line. Below the staff, there are dynamic markings 'ff' and 'f' with upward arrows pointing to notes at measures 260 and 265 respectively. There are also circular symbols at measures 250 and 255.
 - **Cue**: Shows measure numbers 250, 254, 260, 262, 263, 268, 273, and 275. Downward arrows point to specific measures: 254, 260, 262, 263, 268, and 273.
 - **E**: Shows musical notation for cues. At measure 254, there is a note with a dynamic marking 'p' and the text 'gefärbtes Rauschen' above it. At measure 260, there is a wavy line with a dynamic marking 'ff' below it. At measure 262, there is a note with a dynamic marking 'p' and the text 'quasi Rohre' above it. At measure 263, there is another note with a dynamic marking 'p'. At measure 268, there is a wavy line with a dynamic marking 'p' below it and the text 'Sinus als Quietschtier' above it. At measure 273, there is another wavy line with a dynamic marking 'p' below it and the text 'fast gleich' above it. At the bottom left, there is a note with a dynamic marking 'pp' and a crescendo line leading to a dynamic marking 'p', with the text 'Ton' above it.

V

300 305 310 315 320 324

-N
Mittellage
mp

P

ZEIT NEHMEN
(Langsam Superball nehmen)

302 305 310 315 320 323

Tomtom
r.H. f

Tomtom
r.H. f

Tomtom
l.H. Druck

l.H. mf
p-mf

möglichst tiefer Dauerton

Cue

300 305 309 315 320 325

E

(Superball auf Tomtom durchlassen)

f > mp f p

mp p

V



342
↓
A- (Kantilene)

mp < mf > mp

P

325 330 335 340

Stiel auf Rand

ff f pp

tr

+

-

345
↓
Tamtam

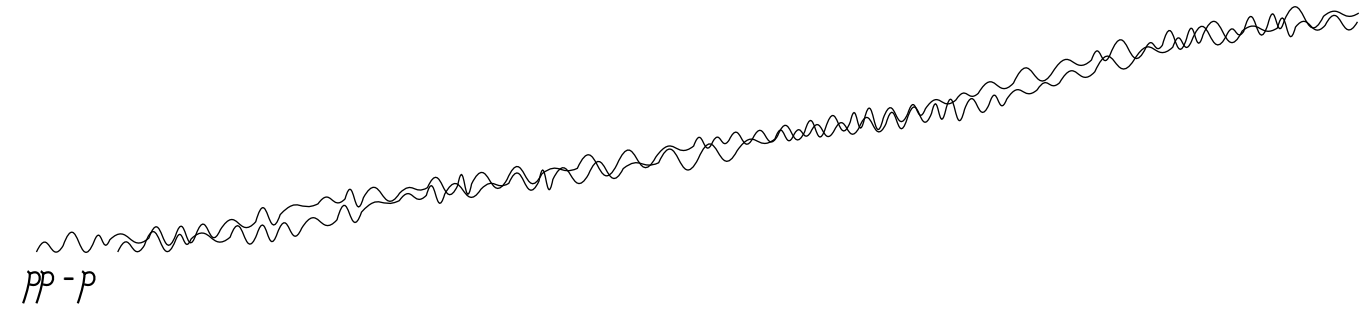
(Faust oder Handballen)
Rhythmus hier nicht streng; unberechenbar

pp sehr dunkler Klang, Anschläge weich

Cue



E



V

350 355 360 365 370 375

↓

-L-

♪ Mittellage

mp

P

355 358 360 365 370 375

Rohre
(Fingernagel)

1 ♪

mf

Bongos

ff

Tamtam

pp dunkel, weich (wie 345)

Cue

350 358 365 370 375

358

E

V

378 ↓ E (flüstern) *mf*

385

390

396 ↓ M Mittellage *p*

P

375 ↓ Woodblock *f*

378 ↓ Tomtom rim shot *f*

387 ↓ *p*

392 ↓ Rohre *mp* *mf*

398 ↓ Tempelblock *p*

Cue

375

380

381

387

390

392

400

E

mf *p*

Glöckchen *p* *mf* *mp*

(ähnlich) *mp* *mf*

p *mp* *p*

V

400 405 410 414 420 425

WA WA WA
 3 3 3
 wie 54
 mf

P

400 407 410 415 419 424

Tamtam
 am Rand
 tr

Bongos
 pp

Fingerknöchel
 p

Quietsch-
 tier

Cue

400 405 410 412 416 420 425

E

hoch

sehr hoch

p-pp

fp

"m" tief und
 Orgel Luft

p

V

425 430 438 444 450

-S (stimmhaft)

mf

IHN

sehr tief

p

P

425 429 435 440 444 446 450

Tempelblock

Alufolie

p *mf* *p*

mf

Cue

425 430 435 438 440 443 446 450

"m" Überlagerungen

Glöckchen

Ratsche

kurze Kratzer

Orgel Luft

p *pp* *f* *p*

V



SCHMRZT



ff

P



Waldteufel

Den Waldteufel langsam nehmen,
hochhalten, anspannen.
Es kommt aber entweder nichts, oder höchstens ein Knackser. Langsam weglegen.



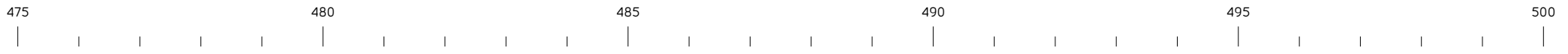
Cue



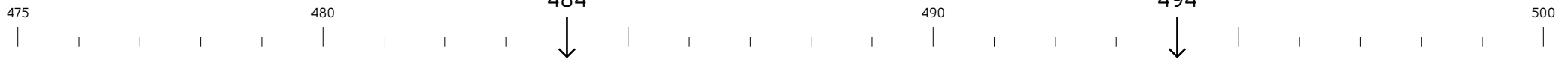
einzelne Knackser, quasi Waldteufel

E





V



P

Papier groß



mit beiden Händen knüllen

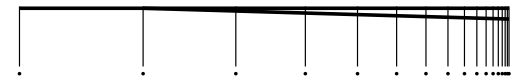


o



Pingpong Ball

nach vorne auf den Boden werfen



Cue



Glöckchen



p

E

Orgel Luft

o

