

Joachim Heintz

# Bizarre Plätze

## Displaced Locations

Spielpartitur Schlagzeug / Performance Score Percussion

comments and explanations are in the main score only:

[https://joachimheintz.de/stuecke/part/bp\\_score\\_main.pdf](https://joachimheintz.de/stuecke/part/bp_score_main.pdf)

2022

# Bizarre Plätze

Version for percussionist

♩ = 54



## Voice

DER

♩ Sprechstimme

mf < f

## Per- cussion

0  
↓  
Tomtom

r.H. *f*

+  
L.H.   
- Druck

9  
↓

*mp*

19 21  
↓ ↓  
Bongos

*ff* *mf*



## Elec- tronics

mit Tonhöhe (ähnlich Tomtom)   
*mf*   
*p*

*pp*   
metallisch (Ratsche)

*p*   
*p*

*f*   
*pp*

25 30 36 40 45 50

V

FLUSSSS

(sehr laut flüstern)

31 34 40 49

Rohre

tr

r.H.  $\frac{2}{4}$   $\frac{3}{4}$

pp p

Bongos

mf

Tamtam

mf

---

25 30 35 40 45 50

E

f

f

V

50 | | | | | 54 ↓ | | | | | 60 | | | | | 65 | | | | | 72 ↓ | | | | | 75

BEKAM

mf kindlich singen

SCHMRZN

ff sehr verspannt, Überdruck

P

mit der Rückseite der Bürste schlagen

68 ↓ Rohre 70 ↓

mp

Waldteufel

f

E

50 | | | | | 55 | | | | | 60 | | | | | 66 ↓ | 68 ↓ | 70 | | | | | 75

pp (etwas aufgerissener als bei 16)

p (ähnlich Rohr 3)

**V**

75 80 85 92 100

79 82 87 96 99

Woodblock Tomtom

IM ARM  
*p* gesungen, hoch

**P**

r.H. *f*

Tomtom (Griff)

L.H. Druck *mp*

Tamtam

r.H. *p* L.H. *p*

75 79 87 90 95 100

Rauschen, Mittellage

*mf* *p*

**E**

100 106 110 115 120 125

V

UND

Sprechstimme

mf > p

115

P

Alufolie

(Finger beider Hände)

mp

100 105 112 120 123 125

E

sehr hoch

6

p mp

krachen, fallen

p f

5 (P)

**V**

125 | | | | | 130 ↓ | | | | | 135 | | | | | 140 ↓ | | | | | 145 | | | | | 150 |

WEH  
sehr tief  
*p*

TAT  
sehr hoch  
*pp*

regungslos stehen -----

**P**

126 ↓ 128 ↓ 131 ↓ 135 ↓

Tomtom  
*p*

Woodblock  
*p*

Papier klein  
*f*

Tempelblock  
*p*

regungslos stehen -----

---

**E**

125 ↓ 127 ↓ 129 ↓ | | | | | 134 ↓ | | | | | 138 ↓ | | | | | 145 | | | | | 150 |

quasi "m"  
*p*

*f*

V

150 155 163 170 175

IH-

mf  $\rightarrow$  p

P

150 151

Rohre

Stiel Schlägel

p pp p pp

169

Waldteufel

langsam mit Knacksern  
möglichst glissando

f

E

150 152 154 158 163 170 173 174

quasi clicks

f

Glöckchen

p  $\leftarrow$  mp  $\rightarrow$  p

Orgel Luftton

p

pp



175 179 185 190 195 200

**V**

176 189 198

**P**

**Bongos**  
 (am Rand)  
 mf pp ff

**Tempelblock**  
 L.H. p

**Woodblock**  
 r.H. f

M  
 Mittellage  
 mp

175 180 181 190 199

**E**


sehr hoch, quasi Sinus  
 p p p


"m"  
 mp

Mittellage  
 p

p

**V**


201 ↓ DAS HERZ  
hoch  *p*

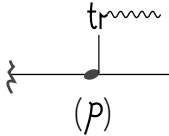
213 ↓ SO  
sehr tief  *mp*

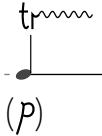
217 ↓

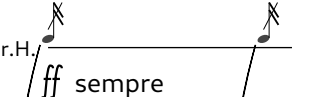
222 ↓ Bongos

**P**

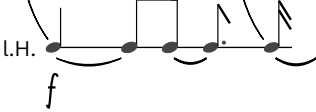
(*f*) 

 (*p*)

(*p*) 

r.H.  *ff* sempre

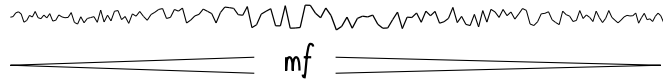
Tomtom

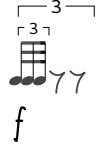
L.H.  *f*


---

200 203 206 210 214 216 220 225

**E**

 *mf*

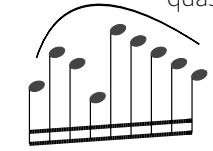
Ratsche  *f*

Rauschton  *p*

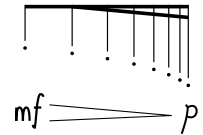
V

225 230 235 239 247 250

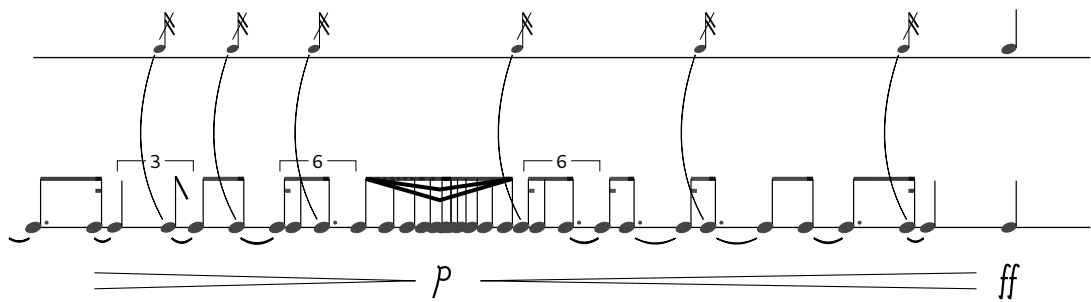
SANG quasi Kantilene



DER



P

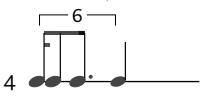
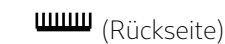


243

245

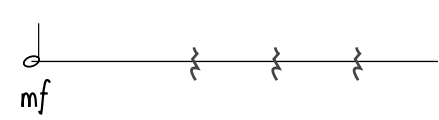
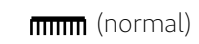


Rohre



p < f

Tamtam



E

225 230 237 245 250

quasi Bürste auf Tamtam



p

**V**

250 255 260 265 270 275

**P**

260 265 270

**NCKT(E)**

**Quietschtier**  
quasi Kantilene

**E**

250 254 257 260 263 268 273 275

Ton

gefärbtes Rauschen

quasi Rohre

Sinus als Quietschtier

fast gleich

*pp* *p*

*p* *ff* *p* *p*

V

Musical notation for Voice (V) part, measures 275-298. It includes lyrics: F L S and VO-quasi Gesangsübung. Dynamic markings include *mf* and *mf* with a 3x repeat sign.

P

Musical notation for Piano (P) part, measures 275-298. It includes instrument names: Rohre and Waldteufel. Dynamic markings include *p*, *mf*, and *f*. It features a hand-drawn sketch of a tube and a woodpecker.

E

Musical notation for Ensemble (E) part, measures 275-300. It includes dynamic markings: *pp* (klanglich wie 16) and *mf* to *p*.

**V**

300 305 310 315 320 324

Mittellage *mp*

**P**

302 305 323

ZEIT NEHMEN  
(Langsam Superball nehmen)

Tomtom  
möglichst tiefer Dauerton

r.H. *f*

L.H. *mf* *p-mf*

r.H. *f*

L.H. Druck

**E**

(Superball auf Tomtom durchlassen)

*f* > *mp* *f* *p*

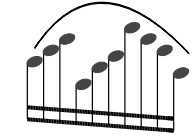
*mp* *p*

V



342

A- (Kantilene)

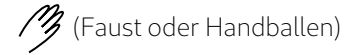


mp < mf > mp

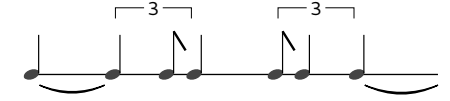
345



Tamtam



Rhythmus hier nicht streng; unberechenbar



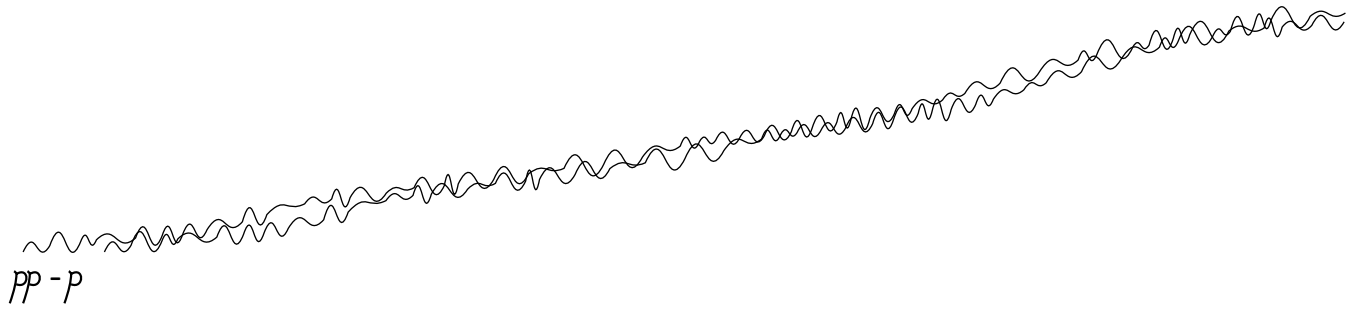
pp sehr dunkler Klang, Anschläge weich

P

Stiel auf Rand



E



V



360

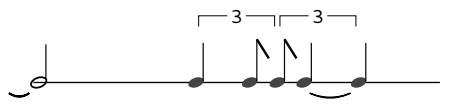


-L-

Mittellage

mp

P



358

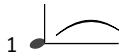


360



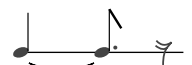
Rohre

(Fingernagel)



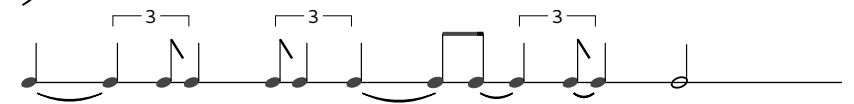
mf

Bongos



ff

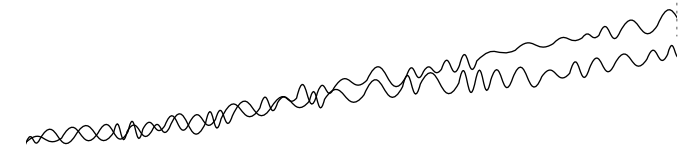
Tamtam



pp

dunkel, weich (wie 345)

E





V

378

E



(flüster)

mf

385

390

396

M



Mittellage

p

375

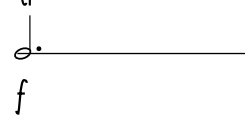
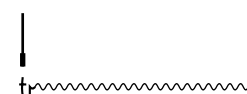
378

387

392

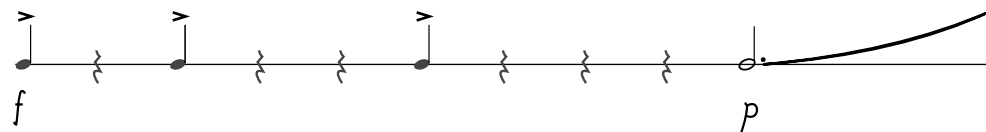
398

Woodblock

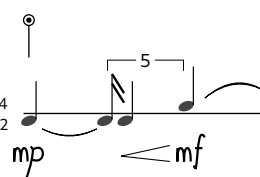


Tomtom

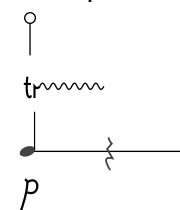
rim shot



Rohre



Tempelblock



E

375

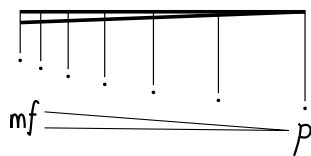
380 381

387

390

392

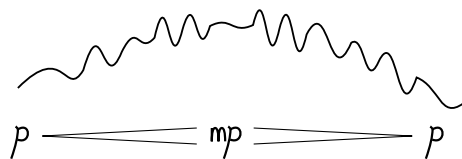
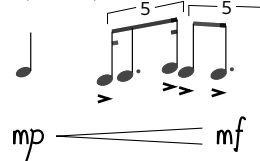
400



Glöckchen



(ähnlich)



V

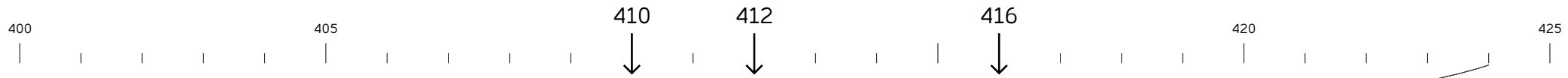


414  
 ↓  
 WA WA WA  
 { 3 } { 3 } { 3 }  
 wie 54  
 mf

P

407                      410    419    424  
 ↓    ↓    ↓    ↓  
 Tamtam  
 | am Rand  
 tr Bongos  
 pp ff  
 Fingerknöchel p  
 Quietsch- tier

E



410                      412    416    420    425  
 ↓    ↓    ↓    ↓  
 "m" tief und Orgel Luft  
 p  
 hoch sehr hoch  
 p-pp  
 fp

**V**

425 430 438 444 450

-S (stimmhaft)

*mf*

IHN

sehr tief

*p*

429

**P**

Tempelblock

*mf*

Alufolie

*p*  $\triangleleft$  *mf*  $\triangleright$  *p*

**E**

425 430 435 438 440 443 446 450

"m" Überlagerungen

*p*

Glöckchen

*pp* *p*

Ratsche

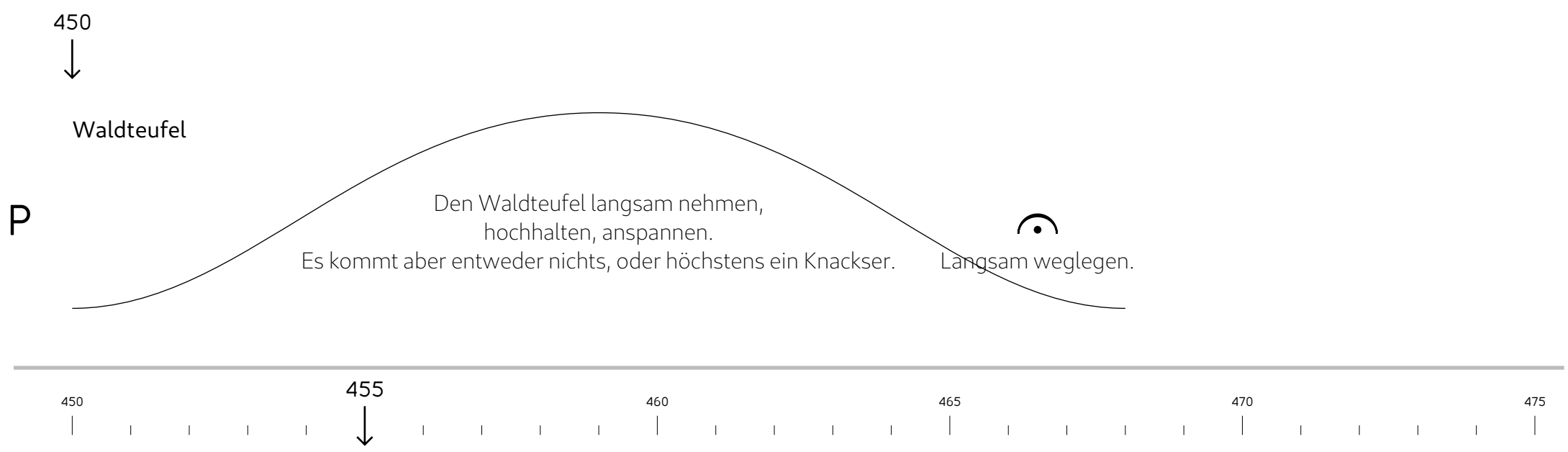
*f*  $>$  *p*

kurze Kratzer

*f*

Orgel Luft

*p*  $\triangleright$  *pp*





V

484  
↓

494  
↓

P

Papier groß



mit beiden Händen knüllen

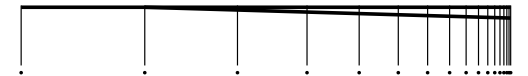


o



Pingpong Ball

nach vorne auf den Boden werfen



Glöckchen



p

E

Orgel Luft

o

